

PERFO

S2T GRASS REINFORCEMENT

PERFO

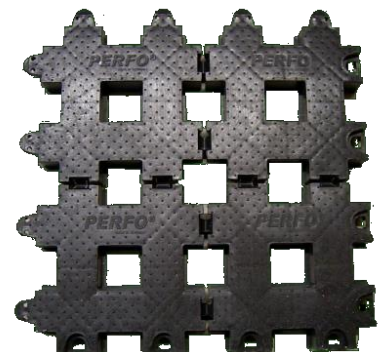
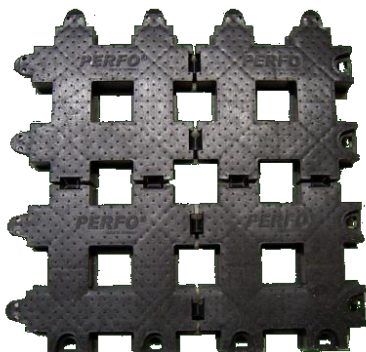
**Interlocking tile system
for reinforcing soft ground**



Contact:

S2T Grass Reinforcement

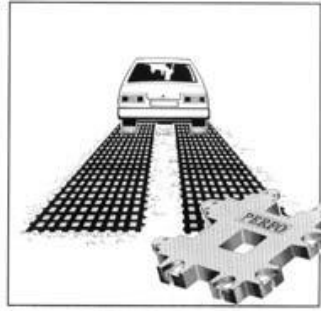
125 High Road
North Weald
Essex CM16 6EA
Tel. +44 (0)1992 522 797
Fax +44 (0)1992 610 725
info@perfo.co.uk



www.perfo.co.uk

PERFO

S2T GRASS REINFORCEMENT



PERFO

Interlocking ground reinforcement system Ideal for tracks, green field parking, campsites

- durable, all weather surface which prevents rutting
- can be rolled into unprepared soft grass surface
- secure interlocking tiles prevent standing edges
- textured surface for improved traction
- excellent load bearing and weight distribution properties
- can withstand loads of up to 100 tonnes/m² once laid
- grass grows back through the tiles in a short time, preserving the character of the environment
- perforated tiles allow natural drainage to be maintained
- installation into a crushed stone layer also possible
- planning permission not required for many applications
- straightforward installation using roller or compactors
- quick to install yourself or with local contractors
- tiles can be removed later, if required
- no splintering or risk of injury
- low cost when compared to alternative options
- frost, UV and acid resistant
- SUDS compliant

Easy to install in
3 simple steps



Transforms soft ground
into a stable base

Grass grows back
through the tiles

Further details available at:
www.s2t-perfo.com

Contact:

S2T Grass Reinforcement



125 High Road
North Weald
Essex CM16 6EA
Tel. +44 (0)1992 522 797
Fax +44 (0)1992 610 725
info@perfo.co.uk

